

Relax, no stress



new

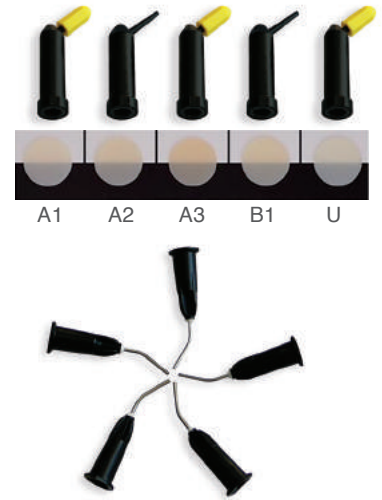
## Estelite Bulk Fill *Flow*



Single layer solution *FLOW* which eliminates shrinkage stress.

At last you will be able to use a flowable "**Bulk**" composite for your esthetic restorations, without the **stress** of cavity configuration.

# Estelite Bulk Fill *Flow*



## Indications:

- Lateral-posterior cavity restorations
- Class I and II cavity lining
- Cavity base for indirect restorations (eliminating undercuts)
- Small repairs of porcelain/composite.

**Resin composite for dental restorations.**

## Easy

Single placing up to 4 mm.  
No need of final "capping layer".  
Extremely easy polishing.

## Esthetic

High color match with the surrounding dentition.  
Superior and long lasting retention gloss.

## Reliable

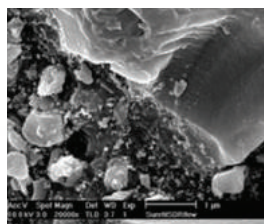
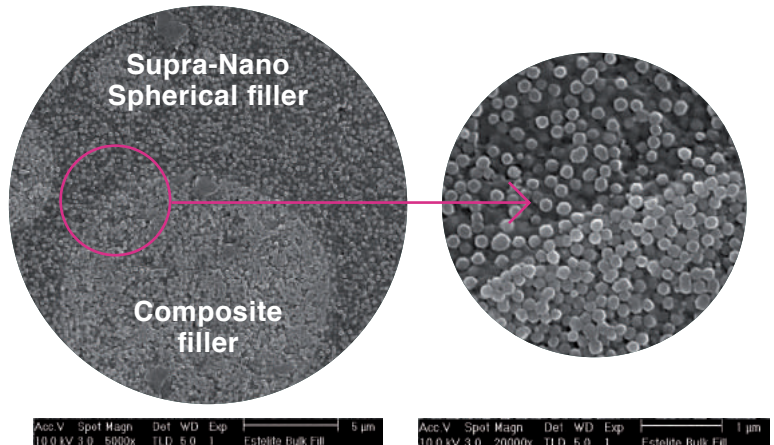
Reduced shrinkage stress.  
Good adaptation to cavity walls.  
High wear resistance and low wear with opposing tooth.

## SUPRA-NANO SPHERICAL FILLER

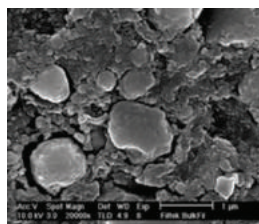
- Outstanding polishability
- Long lasting superior gloss
- High physical and mechanical performance

## NEW PATENTED "EDGELESS" FILLER

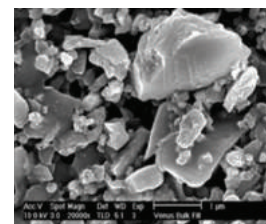
- Spherical prepolymerized rounded shape Supra-Nano fillers
- Less stress
- Reduced polymerization shrinkage



**\*SureFil  
SDR flow**



**\*Filtek Bulk  
Fill flowable**



**\*Venus  
Bulk Fill**

\*This is not a Tokuyama Dental registered trademark

Source: Tokuyama Dental R&D



# Easy

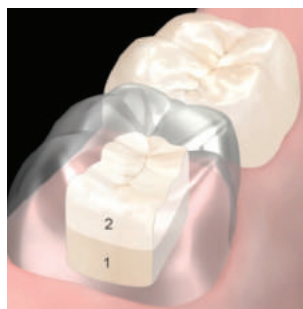
Estelite Bulk Fill *Flow* is totally different from traditional fluid bulk composites, which require a final "capping layer" with a universal composite. With Estelite Bulk Fill *Flow*, only ONE layer up to 4 mm is enough to complete a restoration.

The reduced curing time thanks to the "RAP Technology" and the easy polishing reduce the time to complete a restoration and make it easier without compromising the esthetic outcome.

## Easy filling



Estelite Bulk Fill *Flow*.  
Only one layer, up to 4 mm.

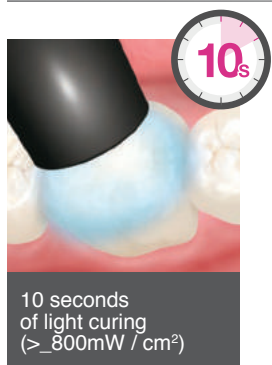


Flowable Bulk composite  
with a final capping layer  
with a universal composite.

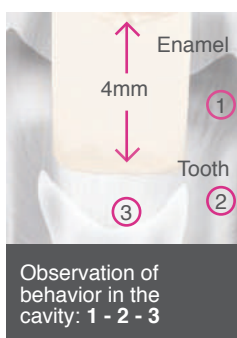


Incremental layering  
technique.

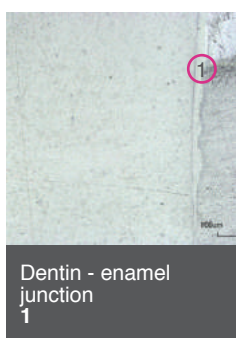
## Quick curing, excellent smoothness, self-leveling effect



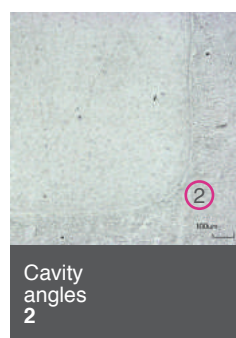
10 seconds  
of light curing  
( $> 800 \text{ mW} / \text{cm}^2$ )



Observation of  
behavior in the  
cavity: 1 - 2 - 3



Dentin - enamel  
junction  
1



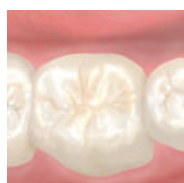
Cavity  
angles  
2



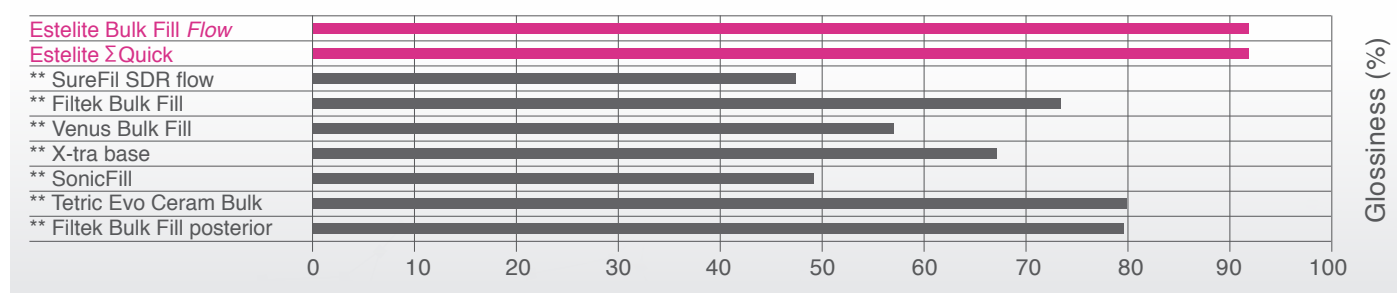
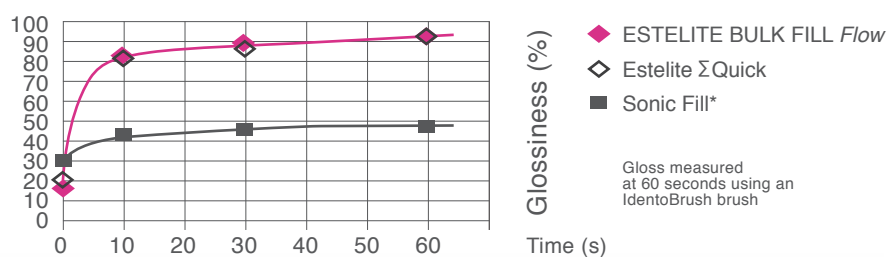
Cavity  
floor  
3

Estelite Bulk Fill *Flow* (Adhesive: BF II)

## Easy polishing



Estelite Bulk  
Fill *Flow* gloss  
reaches over  
80% after 10  
seconds only.



\*\* This is not a Tokuyama Dental registered trademark

\*:  $\geq 800 \text{ mW} / \text{cm}^2$

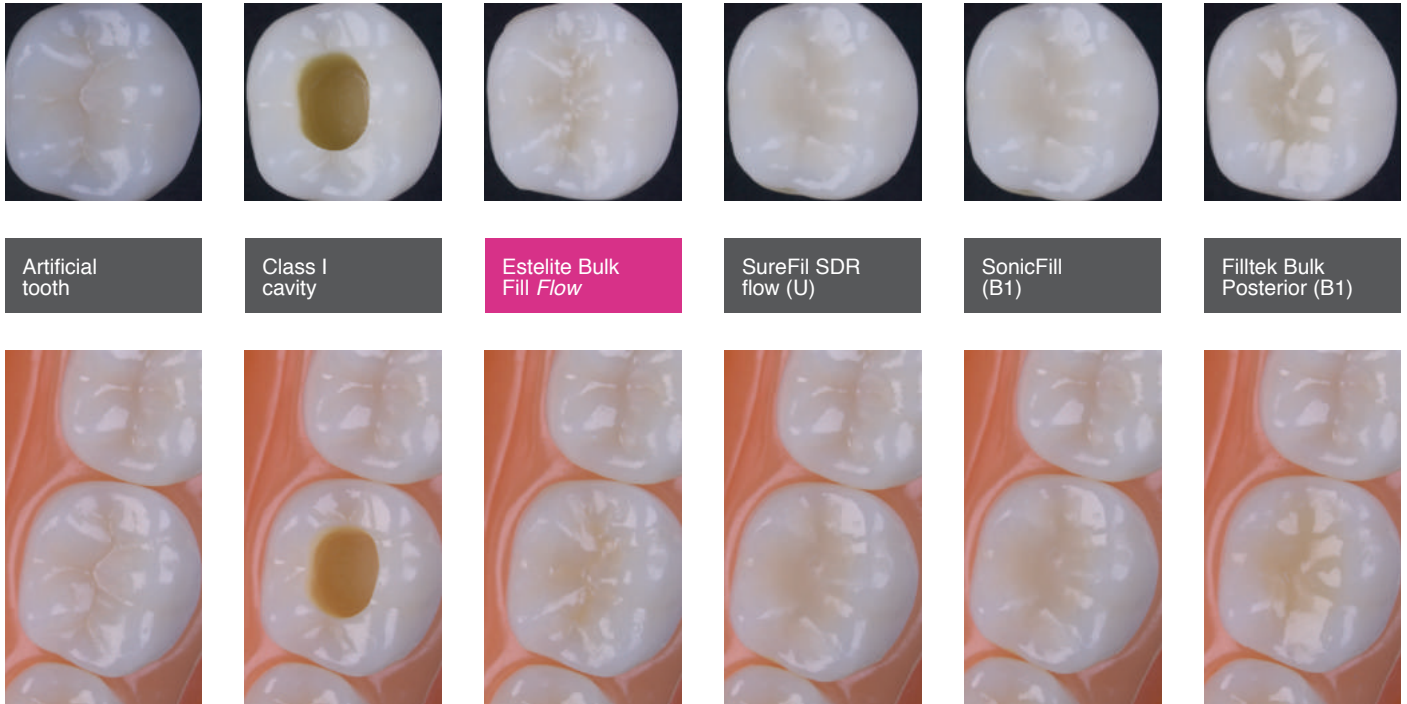
Source: Tokuyama Dental R&D

# Esthetic

## Estelite Bulk Fill *Flow* as a natural esthetic effect

The “chameleon” effect and the appropriate translucency degree of Estelite Bulk Fill *Flow* create an excellent color match with the surrounding dentition.

The difference between the composite restoration and the natural tooth is hardly noticeable!

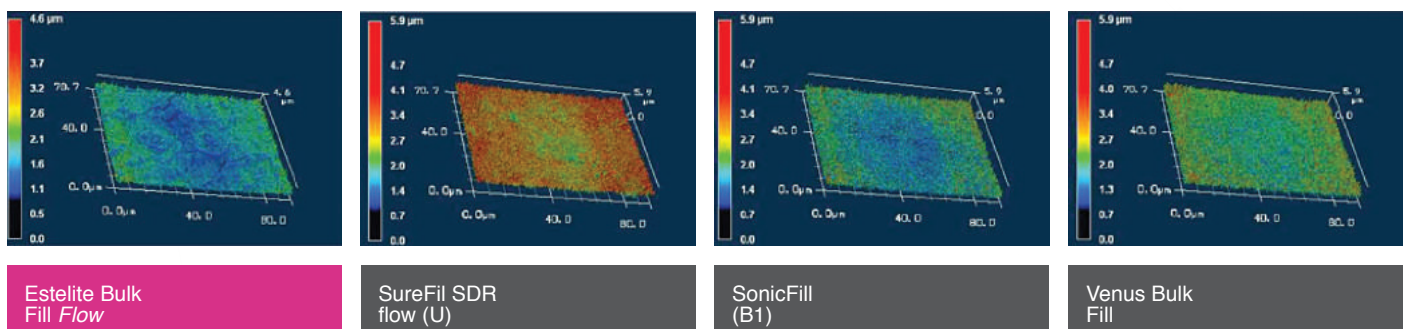


## Superior and long lasting retention gloss

The Supra-Nano spherical filler, patented by Tokuyama with the Sol-Gel technique, makes polishing easier also in Estelite Bulk Fill *Flow*, as in the Tokuyama composite range.

The unique shape and size of the filler particles allow to obtain a smooth surface which remains glossy over time.

## IMAGES OF GLOSS AFTER 10,000 HEAT TEST CYCLES

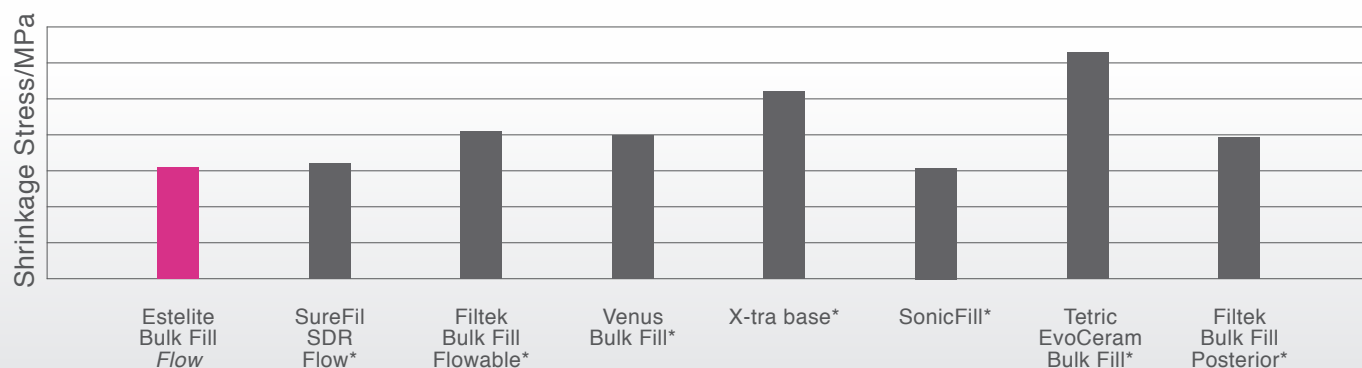


# Reliable

## LOW SHRINKAGE STRESS

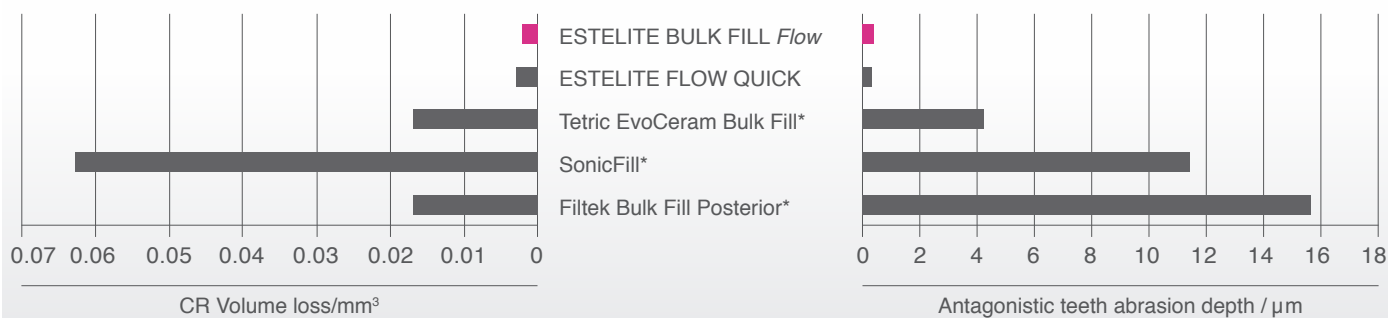
The spherical shape of the Supra-Nano particles and the new "edgeless" rounded shape of the new prepolymerized filler used in Estelite Bulk Fill *Flow* do not restrict the **filler** movement during polymerization. In this way the friction between the filler particles and the organic matrix is reduced. While the material is polymerized, the resin shrinks creating polymers, but the filler particles are free to optimize their position minimizing stress. The result we obtain is an even distribution of stress on the filler particles, while the composite resin shrinkage is reduced.

### SHRINKAGE STRESS MEASURED WITH A 4 MM THICK LAYER



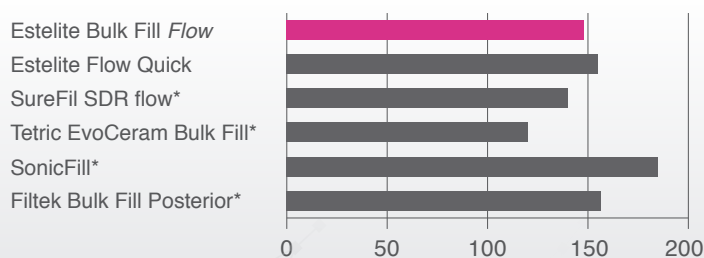
Thanks to its characteristics, including low shrinkage stress and good radiopacity(170%), Estelite Bulk Fill *Flow* ranks among the first compared to competitors. Its high values in compressive and flexural strength, combined with very low wear and abrasion values of the opposing teeth, make Estelite Bulk Fill *Flow* the ideal material for the areas subject to masticatory loads.

### HIGH WEAR RESISTANCE & LESS WEAR TO OPPOSING TEETH

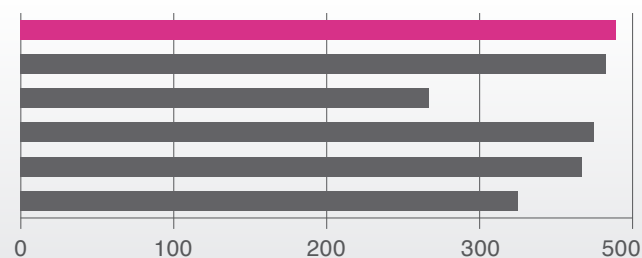


Wear resistance carried out for 50,000 cycles under 0.66MPa load

### FLEXURAL STRENGTH (MPa)



### COMPRESSIVE STRENGTH (MPa)



\*This is not a Tokuyama Dental registered trademark

Source: Tokuyama Dental R&D

# Available packaging



## ESTELITE BULK FILL Flow

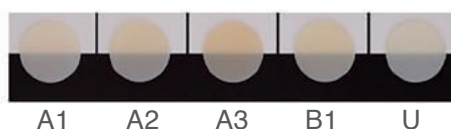
Syringe refills

Contents: 1 syringe (3.0g); 10 intraoral metal tips

Shade card

Available in 5 shades

## SHADES



TOKUYAMA Dispensing Tip

Contents: 50 intraoral metal tips



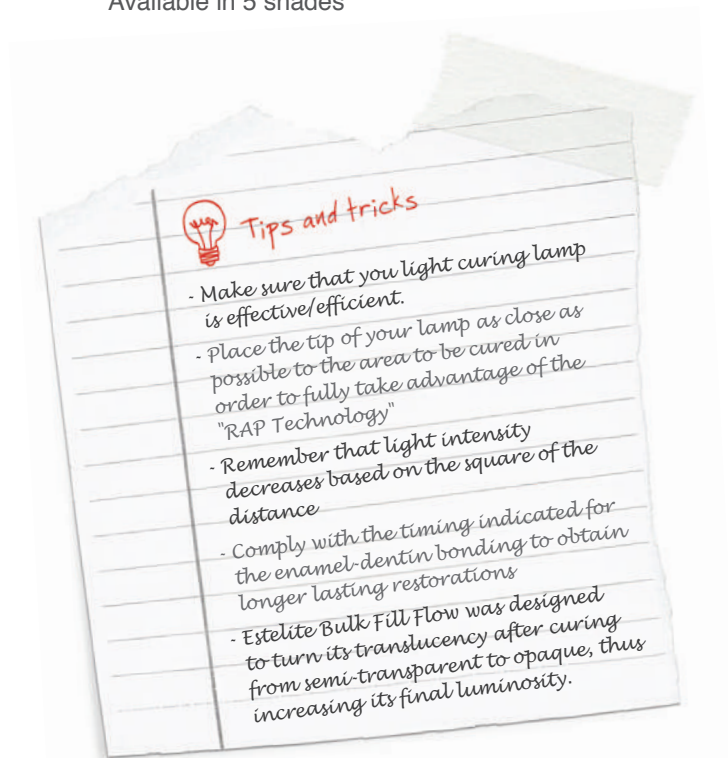
## ESTELITE BULK FILL Flow

PLT refills

Contents: 20PLTs (0.2g)

Shade card

Available in 5 shades



## FOR THE ENAMEL-DENTIN BONDING TOKUYAMA DENTAL RECOMMENDS ITS ADHESIVES

